

**School Library Profiles - 2004-2005 School Year**  
**JENKINS MIDDLE SCHOOL**  
 6410 AUSTIN BLUFFS PARKWAY, Colorado Springs, CO 80918  
 Respondent: Mark Hampson



This report covers the research findings presented in "How School Librarians Help Kids Achieve Standards: The Second Colorado Study" as well as those reported in Fast Facts No. 180 from the Library Research Service, which show that CSAP reading scores increase with improvements in school library programs. Various predictors of academic achievement are reported for the school and its peers. Note that these predictors cannot be explained away by school or community differences. For more information visit:

<http://www.lrs.org/data-tools/school-libraries/impact-studies/>  
<http://www.lrs.org/documents/fastfacts/180NRSxIL.pdf>

The data reported here reflects your school's responses to the Annual Colorado School Library Survey.

**JENKINS MIDDLE SCHOOL**  
**Grade Level: Middle**  
**Enrollment Range: 700 - 999**

Prepared by Library Research Service  
 Colorado State Library-Department of Education  
 201 East Colfax Ave., Suite 309  
 Denver, CO 80203-1799  
 Tel.: 303.866-6900 - Fax: 303.866-6940  
 Web site: www.lrs.org

### Weekly Service Levels

#### School Library Visits per Week

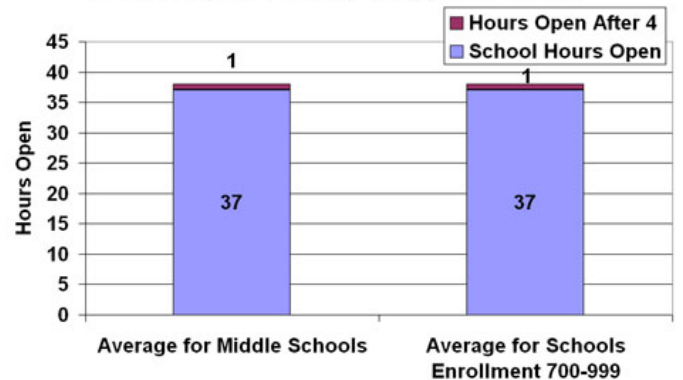
	Your School	Middle Schools Avg.	Avg. for Schools 700-999 Students
Ind. Student Visits	300	297	365
Visits per Student	0.33	0.60	0.40
Class/Group Visits	25	4	3

**Choosing to visit the School Library as an individual, separate from a class visit, is a strong indicator of higher test scores.**

#### Information Skills Instruction per Week

	Your School	Middle Schools Avg.	Avg. for Schools 700-999 Students
Ind. Student Visits	35	77	91
Visits per Student	0.04	0.20	0.10
Class/Group Visits	2	18	24

#### Hours Open During a Typical Week



**When access to school libraries is scheduled flexibly, reading scores improve 13-22%. Flexible scheduling allows students to visit the school library individually.**

	Your School
School Hours Open	40.0
Hours Open After 4pm	1.3

**School Library Profiles - 2004-2005 School Year**  
**JENKINS MIDDLE SCHOOL**  
 6410 AUSTIN BLUFFS PARKWAY, Colorado Springs, CO 80918  
 Respondent: Mark Hampson

**School Library Program Development**

**School Library Collection**

	Your School	Middle Schools Avg.	Avg. for Schools 700-999 Students
Number of Books	13,200	9,715	12,047
Books per Student	15	22	15
Print Subscriptions	12	19	21
Subs. per 100 Students	1	5.0	2.6
Avg. N-F Copyright	1996	1989	1989

Schools with well-developed School Library programs average higher reading scores. Well-developed programs are indicated by staffing level, collection size and age, and expenditures.

**Staff Availability**

	Your School	Middle Schools Avg.	Avg. for Schools 700-999 Students
Librarian FTE	1.00	0.70	0.74
Lib. FTE/100 Students	0.11	0.12	0.09
Total Staff FTE	2.00	1.28	1.26
Staff FTE/100 Students	0.22	0.25	0.16

CSAP reading test scores increase with increases in total staff hours per 100 students.

\* Note: For the purposes of this profile, the terms "School Library" and "Library Media Center" are equivalent. To maintain consistency, this profile uses the term "School Library."

**Operating Expenses**

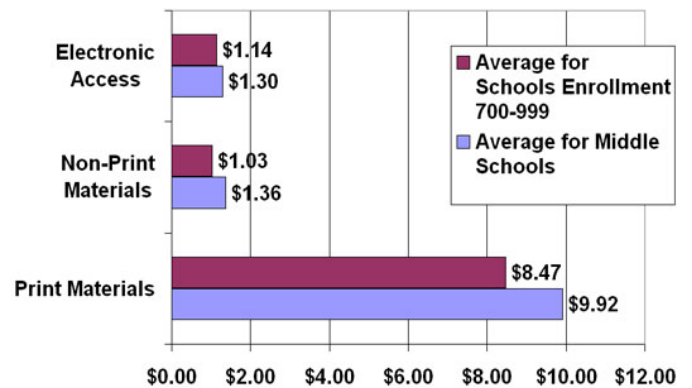
CSAP reading test scores increase with increases in:

- School Library staff hours per 100 Students
- Print volumes per student
- Periodical subscriptions per 100 students
- Electronic reference titles per 100 students
- School Library Expenditures per student

**Operating Expenditures**

	Your School	Middle Schools Avg.	Avg. for Schools 700-999 Students
Total Expenditures	7800	8458	11001
Exp. per Student	8.57	15.97	13.52

**Expenditures per Student**

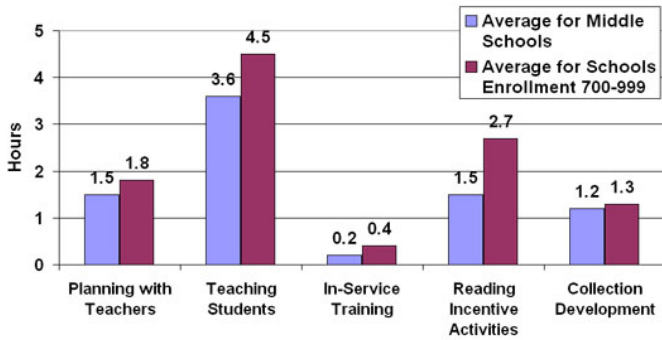


	Your School
Electronic Access	0.00
Non-Print Materials	0.22
Print Materials	7.80

**School Library Profiles - 2004-2005 School Year**  
**JENKINS MIDDLE SCHOOL**  
 6410 AUSTIN BLUFFS PARKWAY, Colorado Springs, CO 80918  
 Respondent: Mark Hampson

**Collaboration and Leadership**

**Weekly Hours Spent on Collaboration Activities**



	Planning with Teachers	Teaching Students	In-Service Training	Reading Incentive Activities	Collection Development
Your School	5	2	2	0	2

Test scores rise in both elementary and middle schools as library media specialists and teachers work together. In addition, scores also increase with the amount of time library media specialists spend as in-service trainers of other teachers, acquainting them with the rapidly changing world of information.

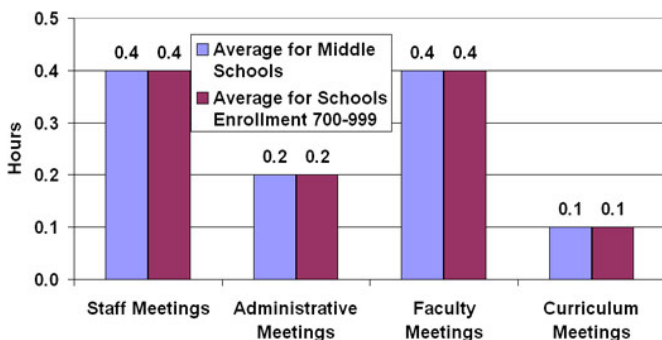
**Information Technology**

**Computers per 100 Students**

	Your School	Middle Schools Avg.	Avg. for Schools 700-999 Students
Library Computers w/Internet	2.0	5.8	3.5
Other School Computers w/Internet	39.1	18.7	16.7
Library Computers w/Catalog Access	2.0	4.5	3.0
Other School Computers w/Catalog Access	39.1	13.9	12.4
Library Computers w/Database Access	2.0	4.5	3.3
Other School Computers w/Database Access	39.1	17.8	15.3

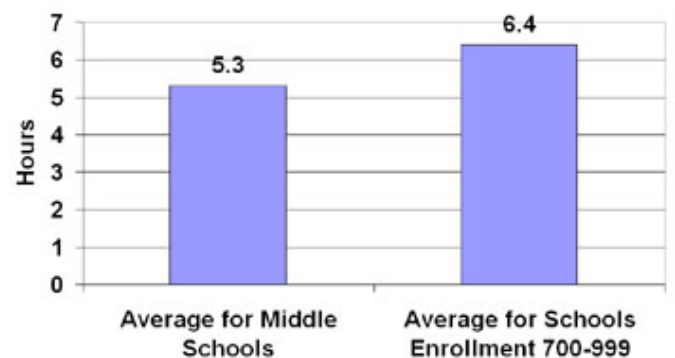
Test scores increase as school librarians spend more time managing a computer network through which the school library program reaches beyond its own walls to classrooms, labs, and offices.

**Weekly Hours Spent on Leadership Activities**



	Staff Meetings	Administrative Meetings	Faculty Meetings	Curriculum Meetings
Your School	3	1	1	2

**Hours Spent Managing Technology**



	Your School
Librarian Hours Spent Managing Technology	20